



Porter Ranch Community School Addition Project

PROJECT UPDATE MEETING

OCTOBER 26, 2016

Porter Ranch Community School

Opened August 2012

New School for approx. 1,047 students in Kindergarten - 8th Grade:

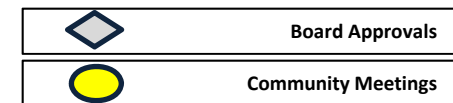
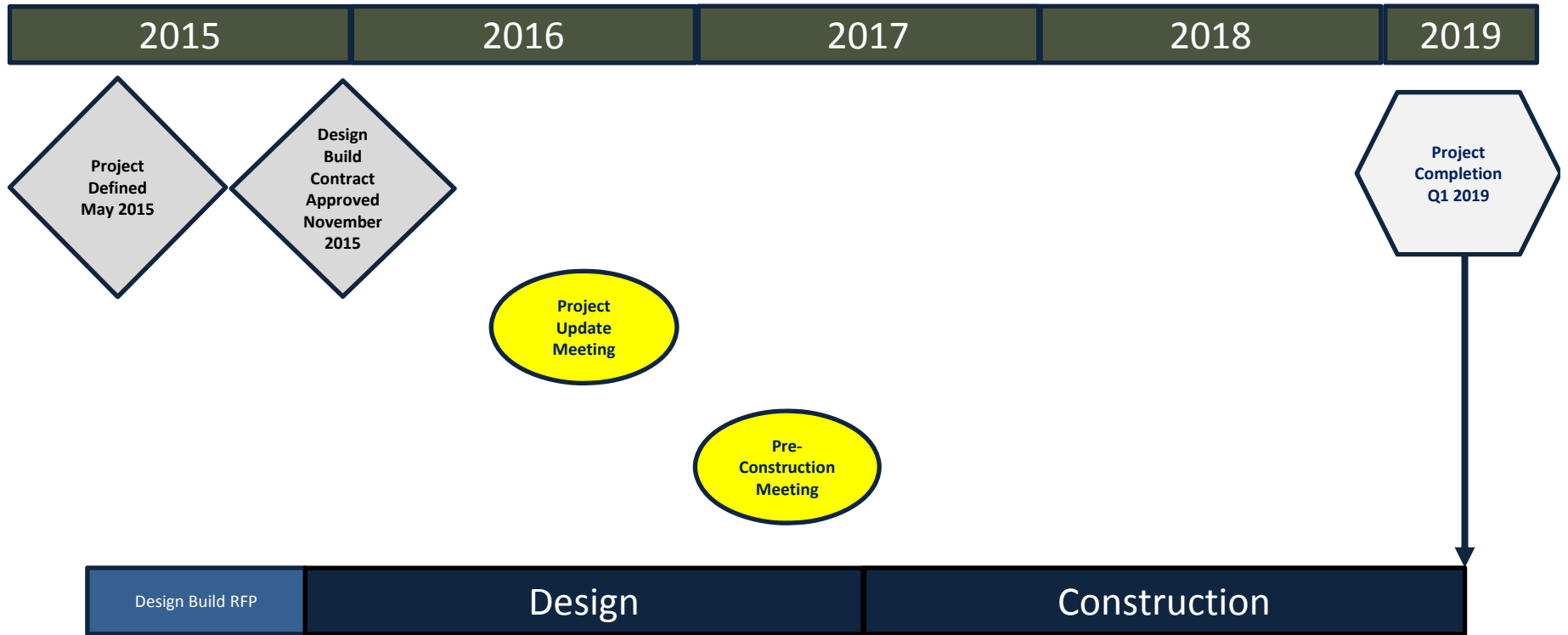
- 41 Total Classrooms (6 Kindergarten, 31 General, 2 Flexible, 2 Science)
- Administrative areas
- Gymnasium
- Food Service
- Lunch Pavilion
- On-Site Drop off/Pick up Area
- Surface Parking Lot
- Outdoor Play area
- *Planned for a Future 9 Classrooms*



Porter Ranch Community School Classroom Addition Project

- PRCS originally constructed to accommodate ~1,047 students
- Enrollment anticipated to increase by 250-400 students by 2018-19 school year
- In May 2015, the Board of Education approved the PRCS Classroom Addition Project
 - Build New Classroom Building consisting of 9 classrooms and support spaces which will add 260 seats for a total of 1,307 seats
 - Temporary Housing – 4 temporary classrooms added in 2015

Anticipated Project Schedule





LOS ANGELES UNIFIED SCHOOL DISTRICT

PORTER RANCH COMMUNITY SCHOOL - CLASSROOM ADDITION

AMOROSO
construction

hpi
architecture



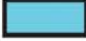



EXISTING CAMPUS AERIAL



LOS ANGELES UNIFIED SCHOOL DISTRICT
PORTER RANCH COMMUNITY SCHOOL - CLASSROOM ADDITION





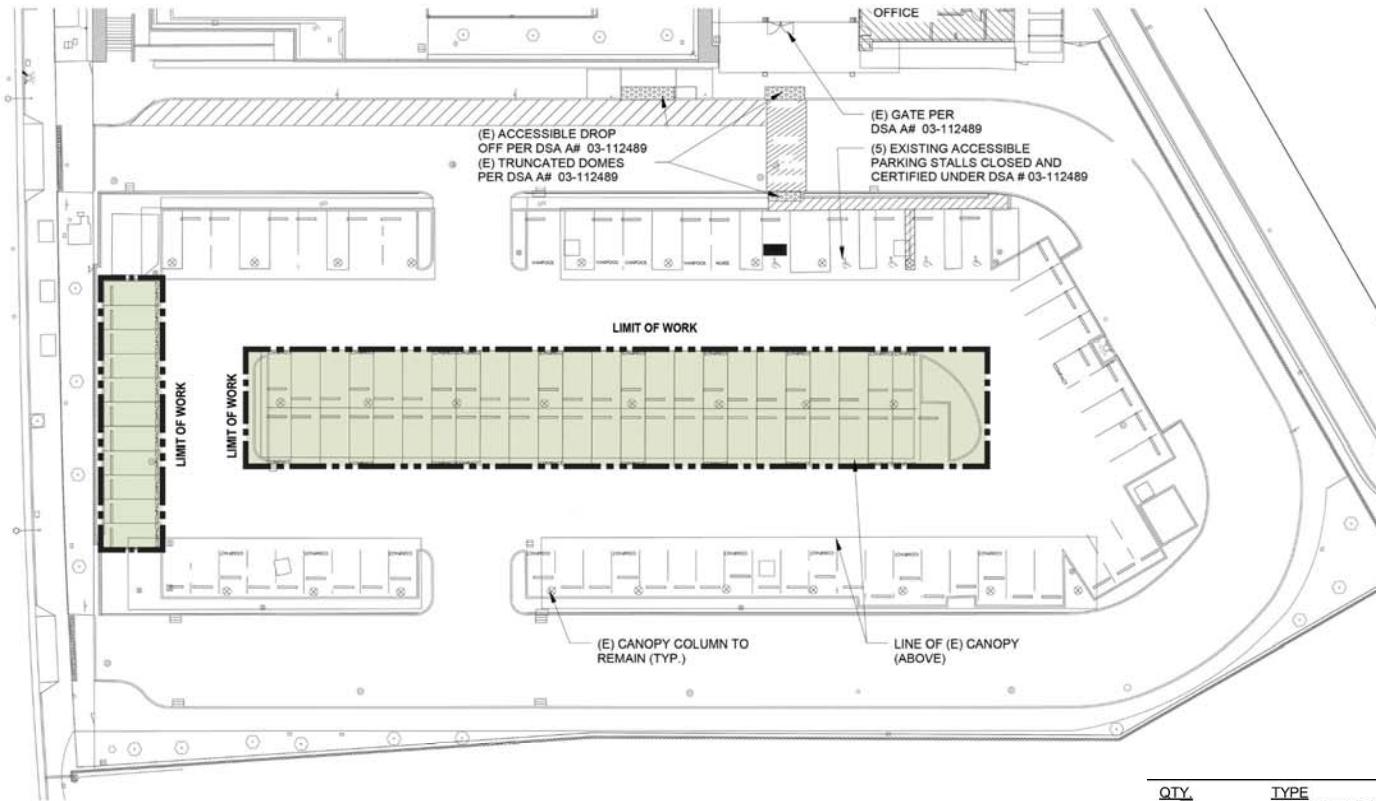
- NEW CLASSROOM ADDITION 
- EXISTING BUILDING 
- NEW LUNCH SHELTER 
- INCREASED PARKING CAPACITY 



LOS ANGELES UNIFIED SCHOOL DISTRICT
 PORTER RANCH COMMUNITY SCHOOL - CLASSROOM ADDITION

SITE PLAN





QTY	TYPE	CODE / STANDARD
66	STANDARD STALLS	
04	VANPOOL STALLS	
41	COMPACT STALLS	PER LAUSD STANDARDS - 40% MAX.
04	ACCESSIBLE STALLS	PER CBC 11B-208.2
01	VAN ACCESSIBLE STALL	PER CBC 11B-208.2
116	TOTAL STALLS	



LOS ANGELES UNIFIED SCHOOL DISTRICT
 PORTER RANCH COMMUNITY SCHOOL - CLASSROOM ADDITION

PARKING LOT





LEGEND

- 1** EXTEND DECOMPOSED GRANITE PLANTER
- 2** EXISTING TURF
- 3** NEW 8' LONG METAL PICNIC TABLE AT LUNCH SHELTER (OWNER FURNISHED, CONTRACTOR INSTALLED)



LUNCH TABLE COUNT:

LUNCH TABLES ARE O.F.O.I.
 (37) 8 FOOT LONG TABLES @ 6 STUDENTS PER TABLE = 222 STUDENTS
 5 OF THE 228 SEATS WILL BE ACCESSIBLE (CBC TABLE 11B-221.2.1.1)



LOS ANGELES UNIFIED SCHOOL DISTRICT
 PORTER RANCH COMMUNITY SCHOOL - CLASSROOM ADDITION

NEW LUNCH SHELTER

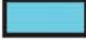







LOS ANGELES UNIFIED SCHOOL DISTRICT
PORTER RANCH COMMUNITY SCHOOL - CLASSROOM ADDITION





- NEW CLASSROOM ADDITION 
- EXISTING BUILDING 
- NEW LUNCH SHELTER 
- INCREASED PARKING CAPACITY 

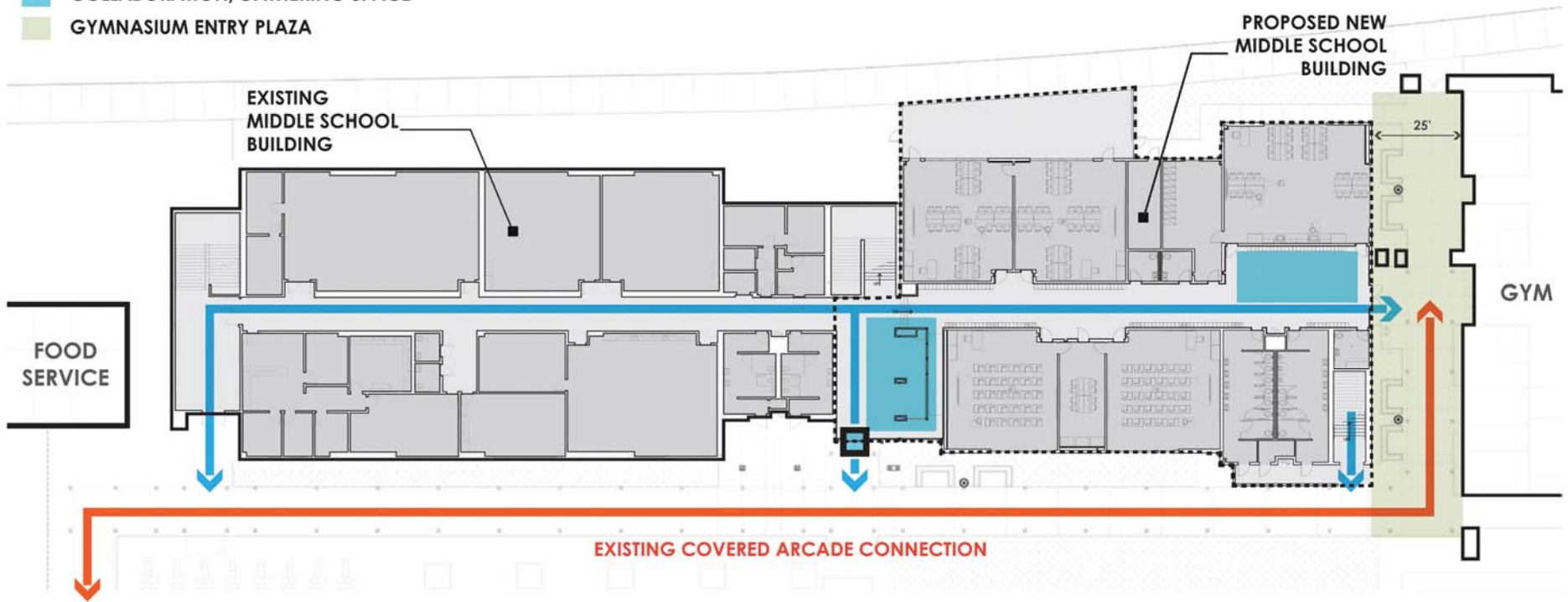


LOS ANGELES UNIFIED SCHOOL DISTRICT
 PORTER RANCH COMMUNITY SCHOOL - CLASSROOM ADDITION

SITE PLAN



- CIRCULATION
- PRIMARY "FORMAL" ENTRY
- COLLABORATION/GATHERING SPACE
- GYMNASIUM ENTRY PLAZA

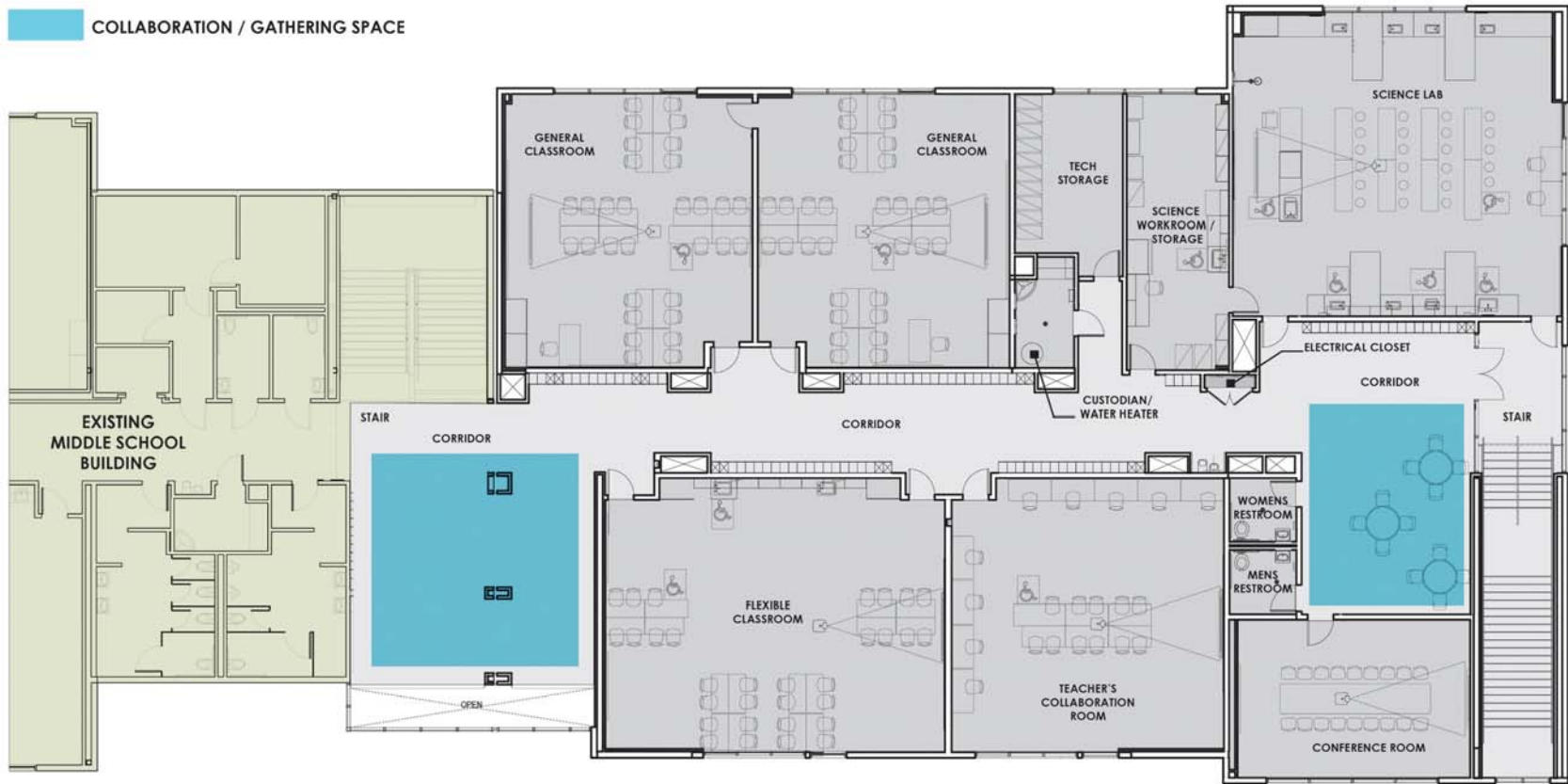


LOS ANGELES UNIFIED SCHOOL DISTRICT
 PORTER RANCH COMMUNITY SCHOOL - CLASSROOM ADDITION

EXISTING + NEW



COLLABORATION / GATHERING SPACE



LOS ANGELES UNIFIED SCHOOL DISTRICT
PORTER RANCH COMMUNITY SCHOOL - CLASSROOM ADDITION

SECOND FLOOR





LOS ANGELES UNIFIED SCHOOL DISTRICT
PORTER RANCH COMMUNITY SCHOOL - CLASSROOM ADDITION





LOS ANGELES UNIFIED SCHOOL DISTRICT
 PORTER RANCH COMMUNITY SCHOOL - CLASSROOM ADDITION



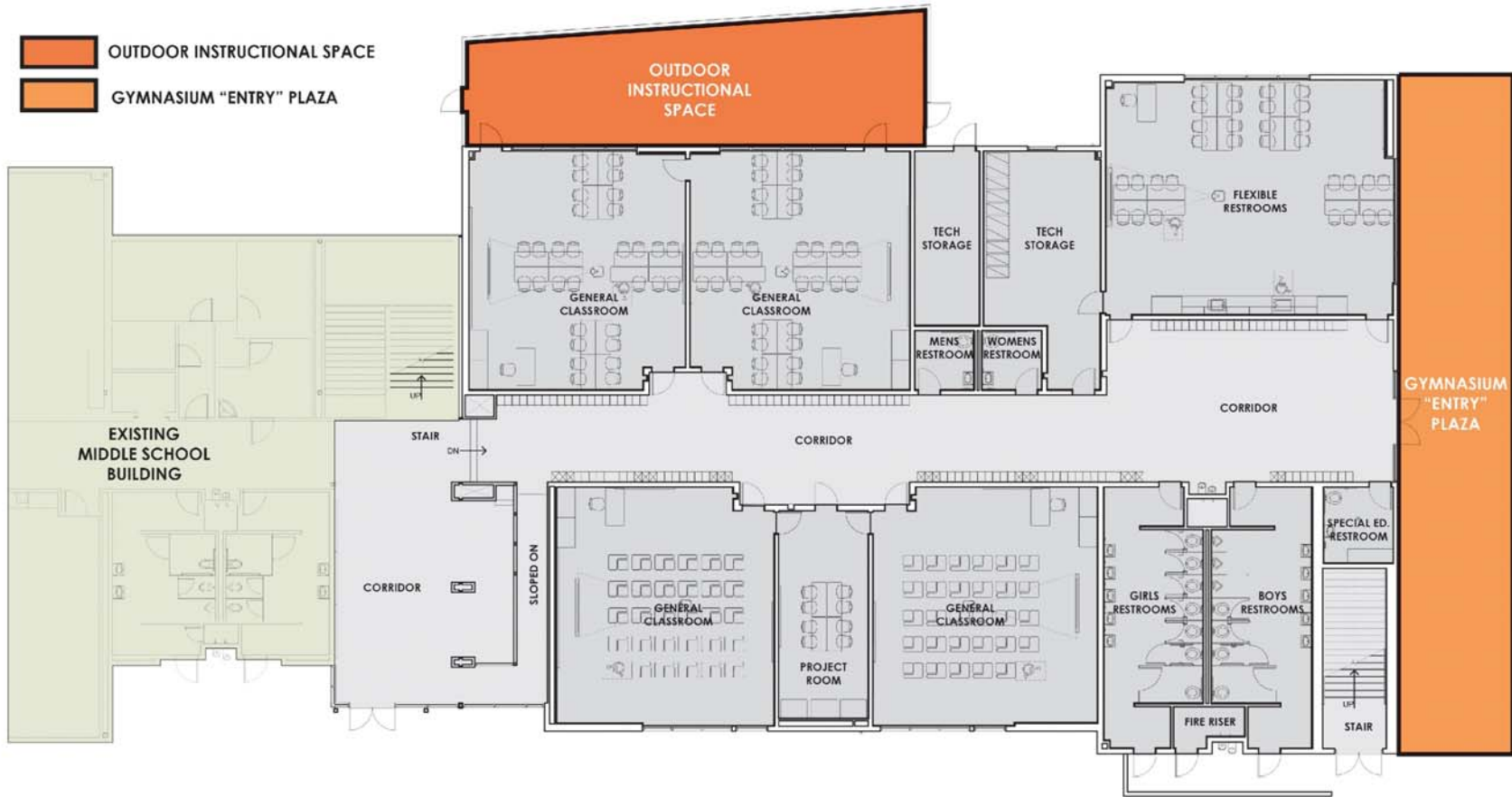
AMOROSO hpi
 construction architecture



LOS ANGELES UNIFIED SCHOOL DISTRICT
 PORTER RANCH COMMUNITY SCHOOL - CLASSROOM ADDITION

SECOND FLOOR





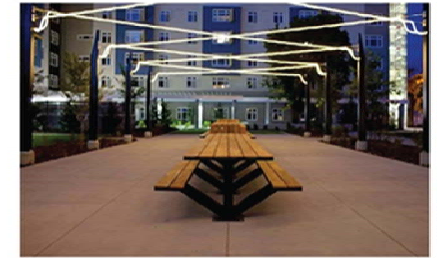
LOS ANGELES UNIFIED SCHOOL DISTRICT
 PORTER RANCH COMMUNITY SCHOOL - CLASSROOM ADDITION

FIRST FLOOR





VINE TRELLIS FOR GARDEN



LONG BENCH SEATING FOR OUTDOOR CLASSROOM



SALVAGED RAISED GARDEN BEDS IN DECOMPOSED GRANITE PAVING



OUTDOOR CLASSROOM WITH MURAL



BOULDER SEATING



CHALKBOARD WALL



LOS ANGELES UNIFIED SCHOOL DISTRICT
PORTER RANCH COMMUNITY SCHOOL - CLASSROOM ADDITION

LANDSCAPE

AMOROSO
construction



hpi
architects

PORTER RANCH COMMUNITY SCHOOL GREEN BUILDING FEATURES

- COOL ROOF** - The lighter colors & material properties of the roof absorb less heat from the sun. This enables your building to decrease air conditioning use & energy consumption.
- SOLAR PANELS** - Additional room on the roof provides the opportunity for future solar panels. Solar panels collect & use energy from the sun!
- SKYLIGHTS** - Tubular skylights bring in natural daylight & help increase the visual appeal & comfort of the hallway.
- ENTRY MATS** - These special mats help prevent bacteria, dirt, & water from entering your building!
- ZERO OR LOW V.O.C.** - Harmful chemicals such as Volatile Organic Compounds (VOCs) are minimized in all interior finishes.
- NATIVE PLANTS** - Native plants require minimal water use & help preserve the natural ecosystem!
- WINDOWS** - High performance windows allow sunlight into the building & minimize solar heat gain.



LOS ANGELES UNIFIED SCHOOL DISTRICT
PORTER RANCH COMMUNITY SCHOOL - CLASSROOM ADDITION





EXISTING CAMPUS
VERNACULAR & STYLING CUES



LOS ANGELES UNIFIED SCHOOL DISTRICT
PORTER RANCH COMMUNITY SCHOOL CLASSROOM ADDITION

AMOROSO construction hpi



LOS ANGELES UNIFIED SCHOOL DISTRICT
PORTER RANCH COMMUNITY SCHOOL - CLASSROOM ADDITION





LOS ANGELES UNIFIED SCHOOL DISTRICT
PORTER RANCH COMMUNITY SCHOOL - CLASSROOM ADDITION





LOS ANGELES UNIFIED SCHOOL DISTRICT
FORTER RANCH COMMUNITY SCHOOL CLASSROOM ADDITION



Next Steps

Pre-Construction Community Meeting

- 1st Quarter 2017

Construction Commencement

- 2nd Quarter 2017



Questions & Comments

For More Information Please Call:

*LAUSD Facilities Services Division
Community Relations*

(213) 241-1338