



LADWP SOLAR NEM BILLING EXPLANATION

PORTER RANCH NC

PRESENTED BY LAVELLA THOMAS

CUSTOMER CONTACT CENTER

MAY 10, 2017

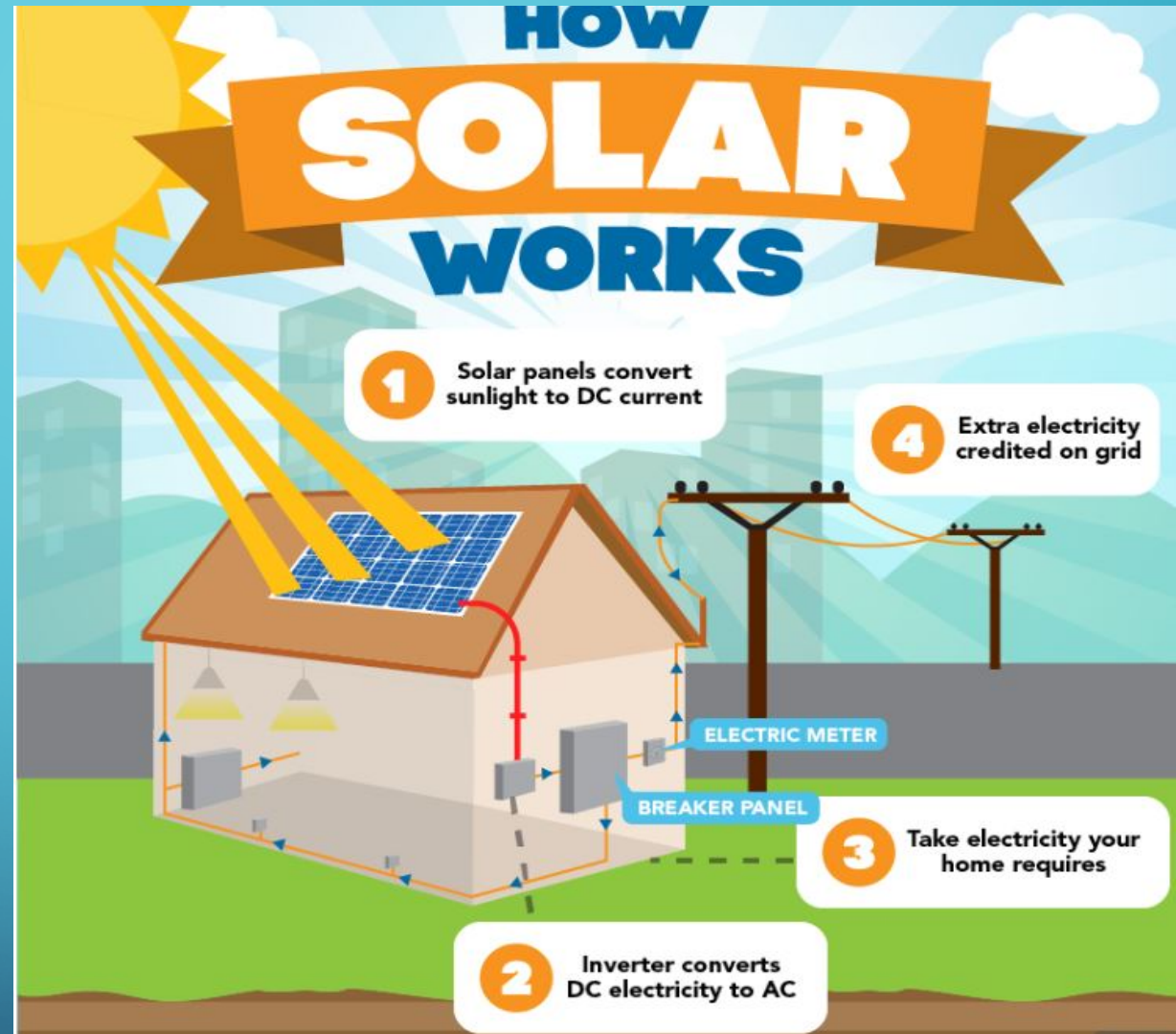
WHAT IS NEM? NET ENERGY METERING

Delivered = LADWP
Customer

Energy provided to the customer when solar is not in production (i.e., night and inclement weather)

Received = Customer
LADWP

Excess energy received from the customers solar system



TIME PERIODS

- **High Peak:** Monday–Friday
 - 1:00pm–4:59pm
- **Low Peak:** Monday–Friday
 - 10:00am–12:59pm
 - 5:00pm–7:59pm
- **Base:** Monday–Friday
 - 8:00pm–9:59am
 - All day Saturday and Sunday



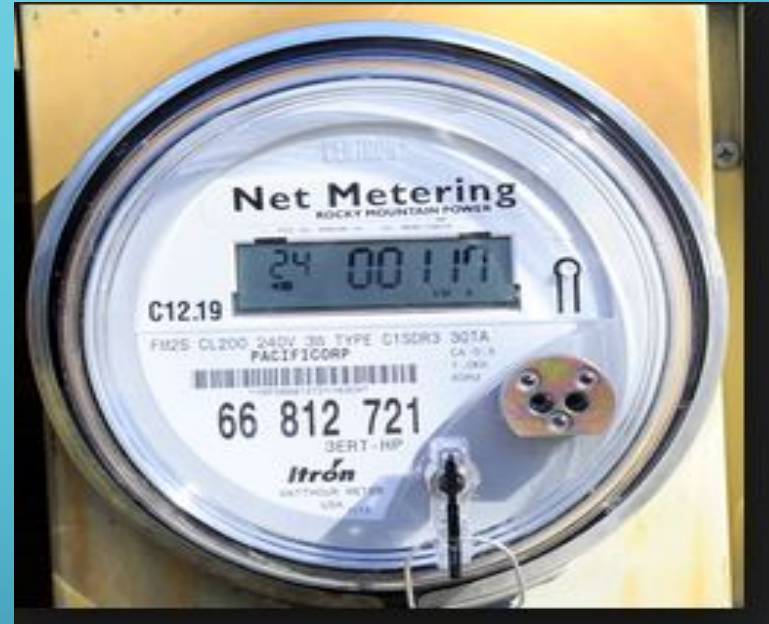
NEM BANK



- Credits can be applied to energy charges only
- Credits cannot be applied to Adjustment Factors, taxes or the \$10 monthly Minimum Charge.
- Customer's credit will be based on the Energy charge plus the Adjustment Factors
- The excess credit goes into the NEM bank; however customers' are still billed the \$10 monthly Minimum Charge plus City Tax, for a minimum bi-monthly charge of \$22

RATE OPTIONS

- Schedule R1A (standard residential)
 - tiers
- Schedule R1B Time Of Use (TOU)
 - There is no Minimum Charge. There is a \$10 monthly Service Charge; but customers may apply banked credits towards this charge.



DEFINITIONS

CRPSEA – (Capped Renewable Portfolio Standard Energy Adjustment) a charge reflecting the costs associated with RPS Operations and Maintenance, RPS debt service, and Energy Efficiency Programs.

ECA – (Energy Cost Adjustment) an adjustment that reflects the variations of fuel, energy and other associated costs.

ESA – (Electric Subsidy Adjustment) a charge reflecting the costs of subsidies including senior, disabled, low income, traffic control lighting, and enterprise zone.

IRCA – (Incremental Reliability Cost Adjustment) a charge reflecting Operations and Maintenance and debt service related to Power Reliability Program cost and legacy RCA under-collection.

kWh – (kilo-watt-hour) the units in which electric usage is measured. One kWh equals 1000 watts of electricity used for one hour.

RCA – (Reliability Cost Adjustment) a charge reflecting the costs to support additional capital investments needed to improve reliability in areas of power distribution, transmission and generation infrastructure.

VEA – (Variable Energy Adjustment) a charge reflecting the costs of fuel, non-RPS power purchase agreements, non-RPS economy purchases, legacy ECAF under-collection, and base rate decoupling from energy efficiency impact.

VRPSEA – (Variable Renewable Portfolio Standard Energy Adjustment) a charge reflecting the costs of RPS market purchases and RPS costs above and beyond any Operations and Maintenance and debt service payments.

POWER ACCESS CHARGE - (Residential) a monthly tiered consumption-based fixed charge applied to R1A Residential customers to recover distribution and customer service related costs.

Electric Charges

BILLING PERIOD 2/15/17 - 4/17/17
DAYS 61
ZONE 1

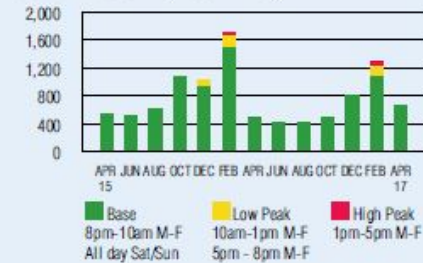
RATE SCHEDULE
 R-1 and R-1[i] Residential Electric - Rate A Standard Service

NEXT SCHEDULED READ DATE
 6/15/17

HIGHEST MONTHLY KWH
 980.156250 Tier 2
METER NUMBER
 AND [REDACTED]

SA #: 2746330781

USAGE HISTORY (Total kWh)



	Prev Yr	Apr 17
Total kWh used	0	279
Average daily kWh	0	0
Days in billing period	57	61

PERIOD	CURRENT READ	PREVIOUS READ	TOTAL USED
High Peak kWh Delivered	1313	1282	31 kWh
High Peak kWh Received	4439	4191	- 248 kWh
			Net High Peak 0 kWh
Low Peak kWh Delivered	3488	3361	127 kWh
Low Peak kWh Received	5473	5188	- 285 kWh
			Net Low Peak 0 kWh
Base kWh Delivered	20439	19447	992 kWh
Base kWh Received	6096	5758	- 338 kWh
			Net Base 0 kWh

Power Access Charge Tier 2		6.00
Tier 1 Energy	279 kWh x \$0.14932/kWh	41.66
Subtotal Energy Charges		\$47.66
City of Los Angeles Utility Tax	\$47.66 x 10%	4.77
State Energy Surcharge	279 kWh x \$0.00029/kWh	0.08

Total Electric Charges \$ 52.51

Net Energy Metering Bank credit balances resulting from customer generation of electricity may not be applied to Minimum Charges, Taxes, Energy Cost Adjustment, Electric Subsidy Adjustment, or Reliability Cost Adjustment, under the terms of the current rate ordinance.

Net Energy Metering (NEM) Bank

NEM Bank Opening Credit Balance	\$0.00
NEM Bank Deposit	+ 0.00
NEM Bank Withdrawal	- 0.00
NEM Bank Closing Credit Balance	\$0.00

Q&A

If you have any additional questions regarding solar billing or SIP feel free to contact us

- Email : solar@ladwp.com
- Call: (866)484-0433
- Website: ladwp.com/solar