



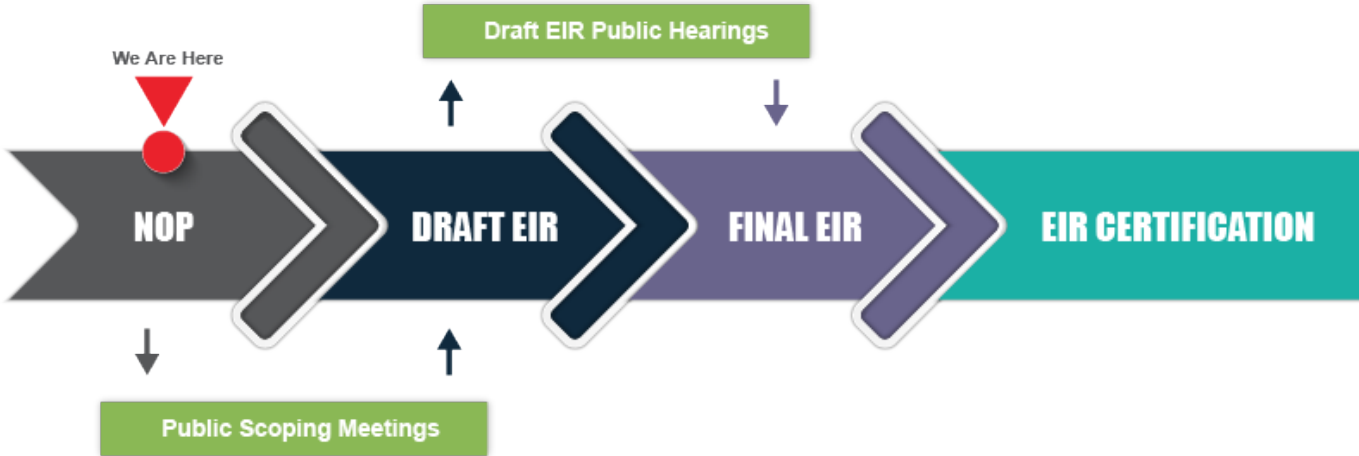
# SAFE SIDEWALKS LA

## Sidewalk Repair Program Environmental Study

### Continuing, Amending and Expanding Safe Sidewalks LA

- The purpose of the Sidewalk Repair Program (proposed Project) is to continue to amend and expand implementation of Safe Sidewalks LA and make City pedestrian facilities compliant with applicable accessibility requirements.
- The proposed Project would repair and upgrade sidewalks and curb ramps throughout the City of Los Angeles.
- Street tree removals and replacements, along with utility relocations, may be needed.
- The City may adopt policies and/or ordinances to assist in the administration of the proposed Sidewalk Repair Program and its objectives.
- A Notice of Preparation (NOP) and Initial Study (IS), which describe the proposed Sidewalk Repair Program and the anticipated scope of the Environmental Impact Report (EIR), are available for public review and comment at [sidewalks.lacity.org/environmental-review-process](http://sidewalks.lacity.org/environmental-review-process).

### Environmental Review Process



### To Provide Input:



#### ATTEND

Public Scoping Meetings. All presentations start at 6:15 p.m. (See reverse side for details).



#### ONLINE

Visit [sidewalks.lacity.org/environmental-review-process](http://sidewalks.lacity.org/environmental-review-process).



#### EMAIL

[shilpa.gupta@lacity.org](mailto:shilpa.gupta@lacity.org) with "SRP" in the subject line and a valid mailing address in the email.



#### MAIL

You can mail written comments to Shilpa Gupta (address below).

#### Written Comments Mailing Address:

Shilpa Gupta, Environmental Supervisor | Los Angeles Bureau of Engineering Environmental Management Group  
1149 S. Broadway, Suite 600, Mail Stop 939 Los Angeles, CA 90015

Wednesday, August 9, 2017  
6:00 p.m. – 8:00 p.m.  
(presentation starts at 6:15)

Ronald F Deaton  
Civic Auditorium  
100 W 1st St  
Los Angeles, CA 90012

Monday, August 14, 2017  
6:00 p.m. – 8:00 p.m.  
(presentation starts at 6:15)

Mid-Valley Senior  
Citizen Center  
8825 Kester Avenue  
Panorama City, CA 91402

Thursday, August 24, 2017  
6:00 p.m. – 8:00 p.m.  
(presentation starts at 6:15)

Westchester Senior  
Citizen Center  
8740 Lincoln Blvd  
Los Angeles, CA 90045

\*All requests for reasonable accommodations must be made three working days in advance of the scheduled meeting date by calling Shilpa Gupta at: (213) 485-4560.

## Frequently Asked Questions

**Q:** What is the proposed Project?

**A:** The proposed Project would continue, amend and expand implementation of Safe Sidewalks LA over approximately 30 years to make City pedestrian facilities compliant with applicable accessibility requirements. Existing sidewalks and walkways will be repaired or replaced under the proposed Project. Street tree removals and replacements, along with utility relocations, may be needed. The City may also adopt policies and/or ordinances to assist in the administration of the proposed Project.

**Q:** What is Safe Sidewalks LA and how does it work ?

**A:** Safe Sidewalks LA is an ongoing sidewalk repair program that offers three ways for constituents to initiate repairs:

- Access Request - Individuals with a mobility disability may submit a request for a sidewalk repair.
- Rebate - Any residential or commercial property owner may voluntarily repair a sidewalk to meet accessibility requirements and then receive a rebate in a specified amount.
- Report a Sidewalk Problem - The general public may report a sidewalk in need of repair.
- For additional information regarding Safe Sidewalks LA, please visit [sidewalks.lacity.org](http://sidewalks.lacity.org).

**Q:** How will street trees be impacted by the Project?

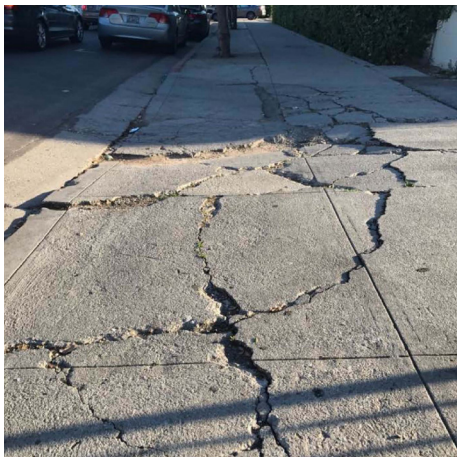
**A:** The proposed Project will potentially result in the removal of large quantities of mature street trees that are the cause of sidewalk damage. Street trees are expected to be replaced at a 2:1 ratio, consistent with current City policy. An ordinance and/or policy may be developed to establish criteria for the proposed Project related to street tree preservation, and removal and replacement. The Initial Study discusses the potential impacts from the proposed Project related to street trees.

**Q:** Where can I get more information about the environmental review process?

**A:** Visit [sidewalks.lacity.org/environmental-review-process](http://sidewalks.lacity.org/environmental-review-process); review the NOP and IS; and submit your comments regarding potential environmental impacts of the proposed Project. Comments are due by September 15, 2017.

Copies of the NOP and IS are available in 35 libraries across the City of Los Angeles for review. A map of the public library locations is available at the webpage above.

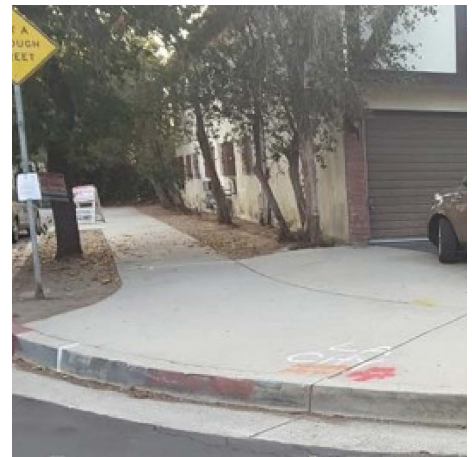
## Examples of Sidewalk Damage and Access Barriers



Cracking



Uplift



Missing curb ramps